

# REDBIRD TD2 JOB AID

## AEROWOOD AVIATION

Revised January 11, 2020

### Table of Contents

<b>Powering up and getting started .....</b>	<b>2</b>
<b>If finished with the session .....</b>	<b>5</b>
<b>Wait – I don’t want to shutdown! .....</b>	<b>5</b>
<b>To create your own flight .....</b>	<b>6</b>
<b>To create a Scenario and Save a flight .....</b>	<b>7</b>
<b>Odds and Ends .....</b>	<b>8</b>

Your feedback from using this simulator is encouraged and appreciated. If you find something to add to the “Odds and Ends” list, especially the “Things We Have Found In The 530” section, please send an email to Ron Horton at [ron@planevisions](mailto:ron@planevisions) or a text to 704.519.6746. We welcome comments, suggestions, and questions!

## POWERING UP AND GETTING STARTED

Power switch on power strip to ON (switch will illuminate)  
Push "START" button on PC

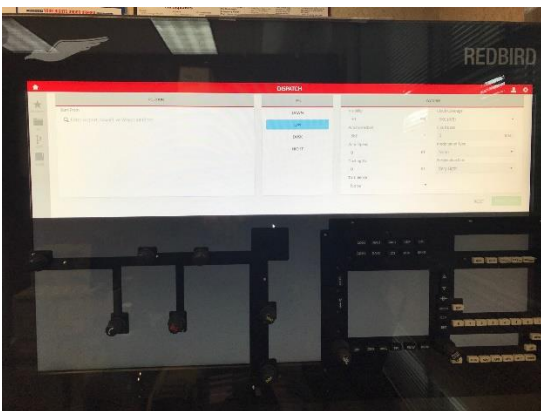


After boot up, RedBird screen is presented

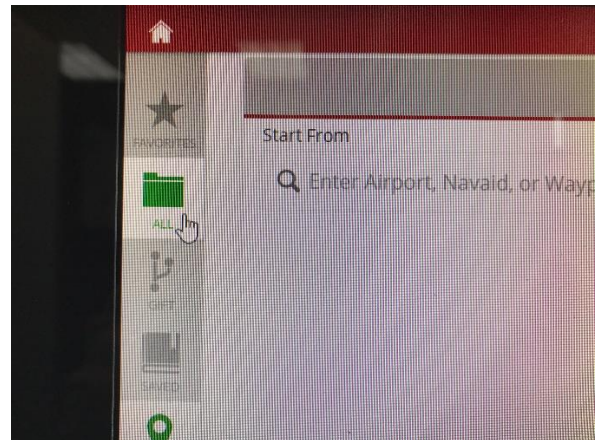
Press ENTER on keyboard to bring up Login screen



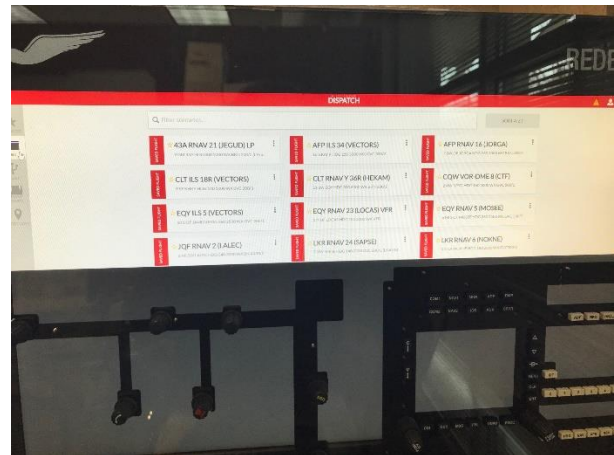
Enter password



DISPATCH screen is presented



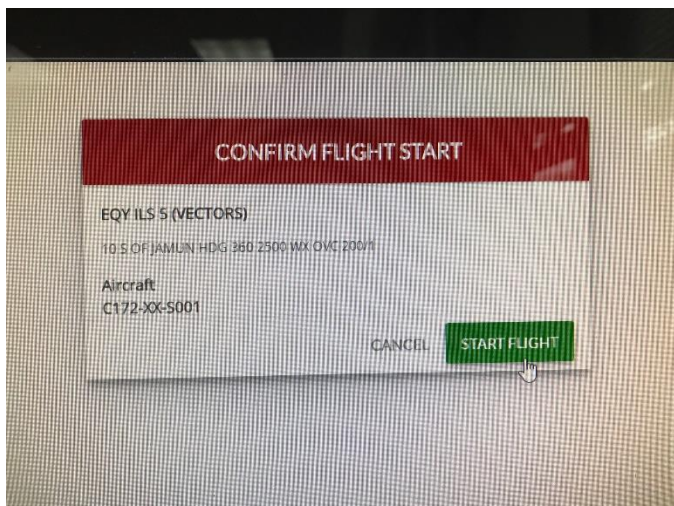
Click on ALL to bring up list of Scenarios ("SAVED FLIGHTS") or FREE FLIGHT to create a flight



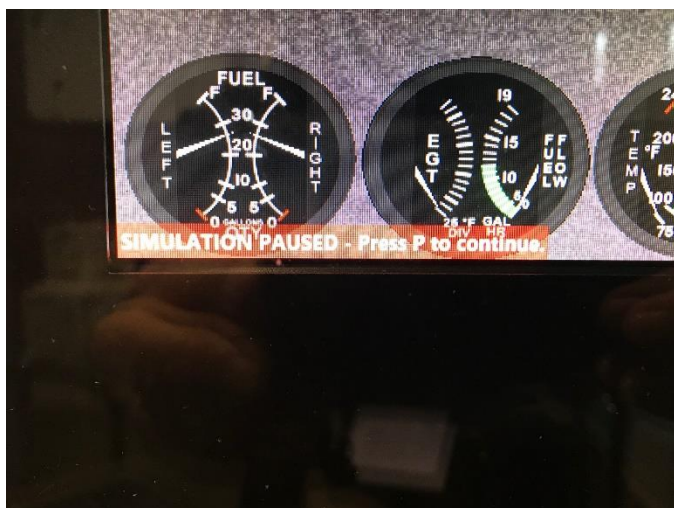
If using Scenario list, clicking on ALL brings up list of Scenarios, sorted in alphabetical order by airport identifier. Position and ceiling/vis are in smaller print under approach name. Some have winds, some do not!

The Scenario ONLY sets position, altitude, and weather. You have to set avionics each time you fly the Scenario (it's good practice!)

Scroll if needed, click on desired Scenario



CONFIRM FLIGHT START screen is presented, click on START FLIGHT



Flight loads, lower left corner reads "SIMULATION PAUSED - Press P to continue". Read Hobbs and enter in Time Sheet in Binder

Avionics are dark. Make sure controls are configured (if you are starting with airplane in Flight):

Magnetos on BOTH  
Master ON

Lights as desired

Avionics Master ON

Throttle ADVANCED

Mixture RICH

Flaps UP

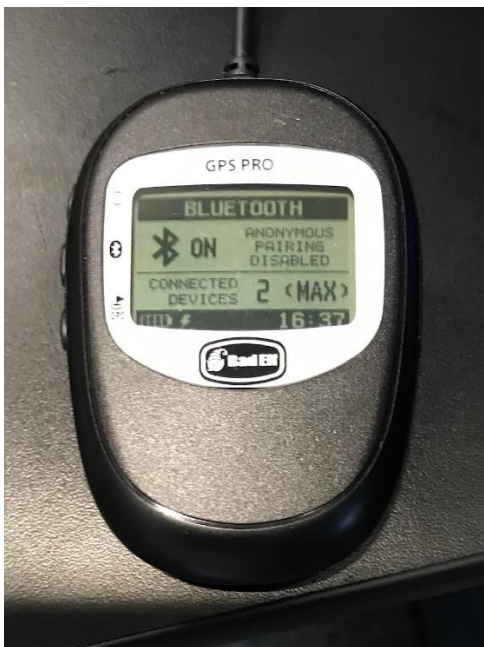


Press "P" to Unpause, then press "P" again to Pause. Avionics are now on, set as desired. Set barometric pressure in Autopilot and push BARO

Load approach in 530, if flying Scenario:

- Direct to airport
- Load approach and activate
- Set data fields IN 530 as desired. Note that:
  1. The middle data field in the top row is fixed as **BRG** and cannot be changed. This is set to **TRK** in the 530s in our 172s
  2. **XTK** does not provide usable data
- Set autopilot if desired
  - HDG or NAV mode
  - Set ALT and ARM
  - Autopilot is a KAP140, manual is on Aerowood website **DOWNLOADS** page





If you want to track position on iPad using ForeFlight or other EFB, connect to “Bad Elf Pro” via Bluetooth. Redbird can connect to a max of two devices at one time. If you see “2 <MAX>” displayed on Bad Elf and your device isn’t connected, look for somebody close by with Bluetooth on that is connected and ask them to disconnect!

Press “P” to unpause and start flight

Press “P” to pause during flight, press “P” again to resume

### **End of Flight**

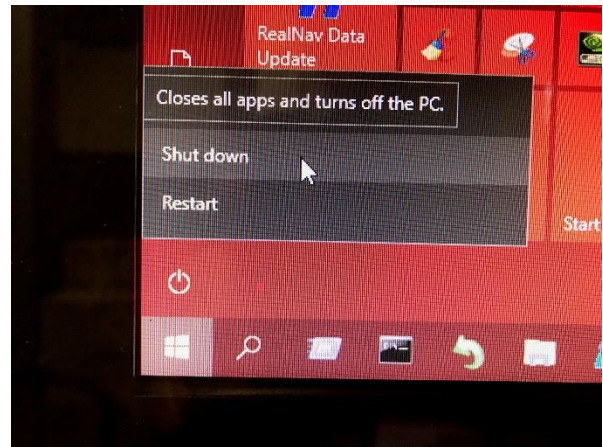
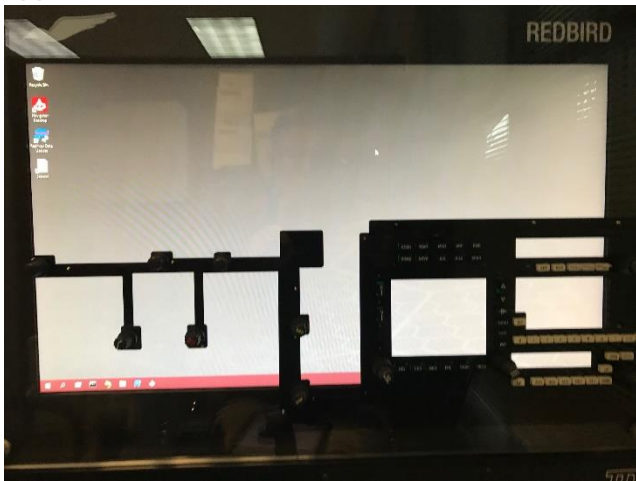
P to Pause and debrief - **read Hobbs** if end of lesson

**ESC** to END FLIGHT

Returns to Dispatch Screen

## IF FINISHED WITH THE SESSION:

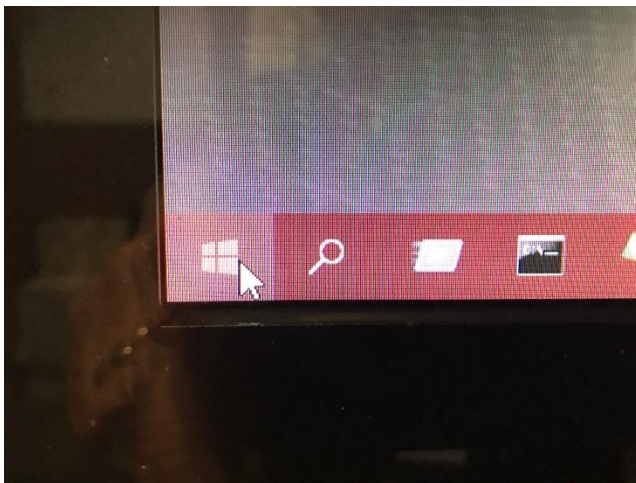
From Dispatch Screen, press ALT F4, this screen appears:



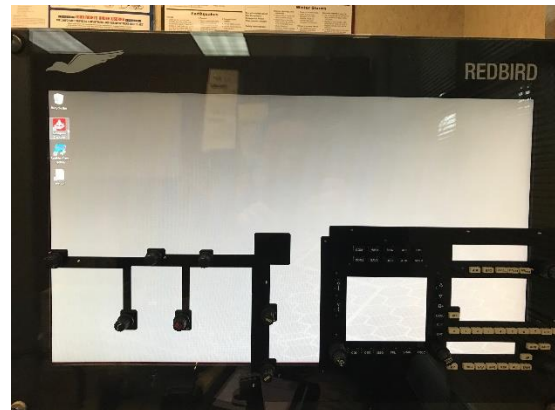
Click on **SHUT DOWN**

Computer will shut down, turn off Power Switch on Power Strip

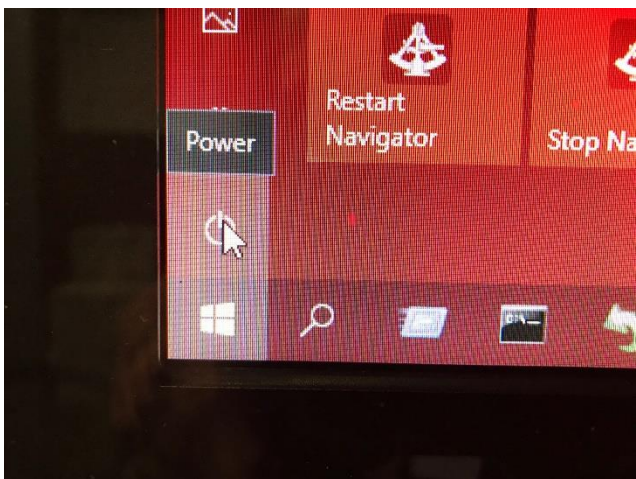
**WAIT – I DON'T WANT TO SHUTDOWN!**



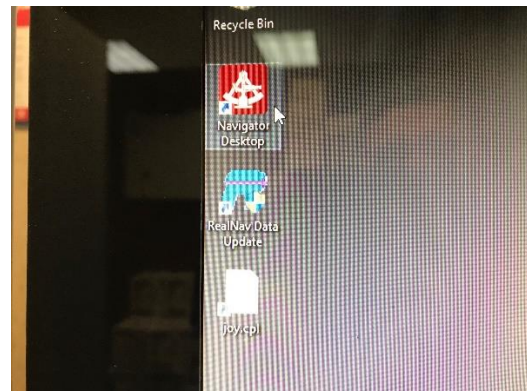
Click on Windows logo in lower LH corner



If you get to this screen but do NOT want to shutdown...



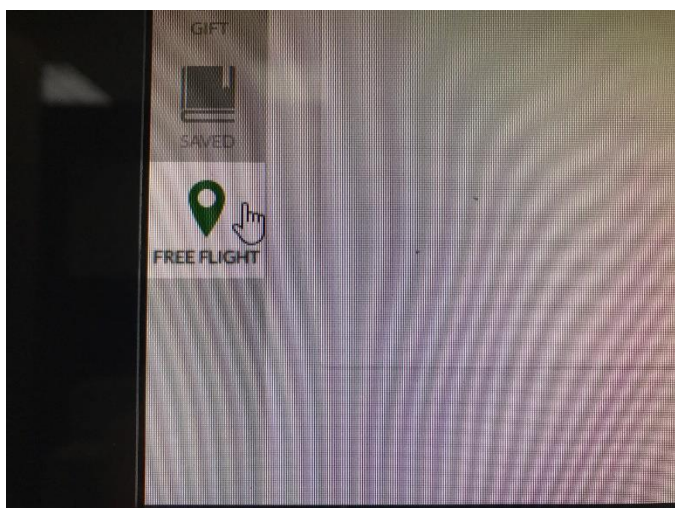
Click on **Power** button



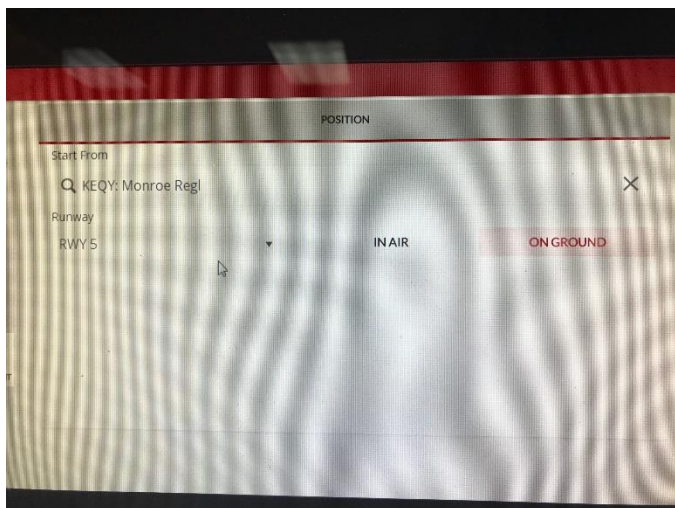
...then double click on NAVIGATOR DESKTOP and it will bring you back to the DISPATCH screen



## TO CREATE YOUR OWN FLIGHT

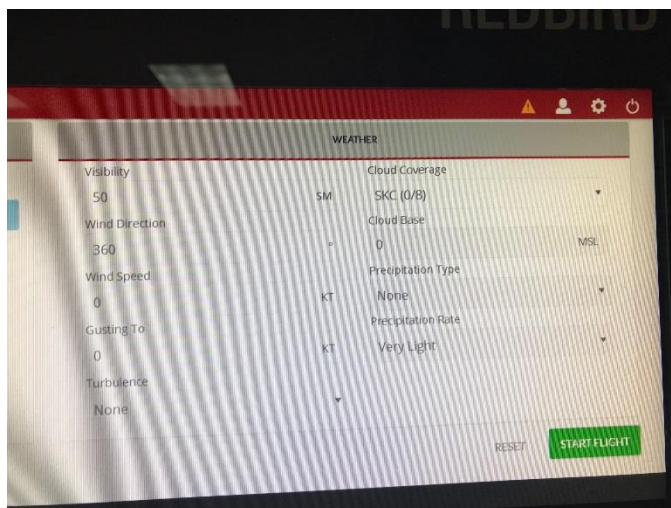


Click on FREE FLIGHT from the DISPATCH screen, then:

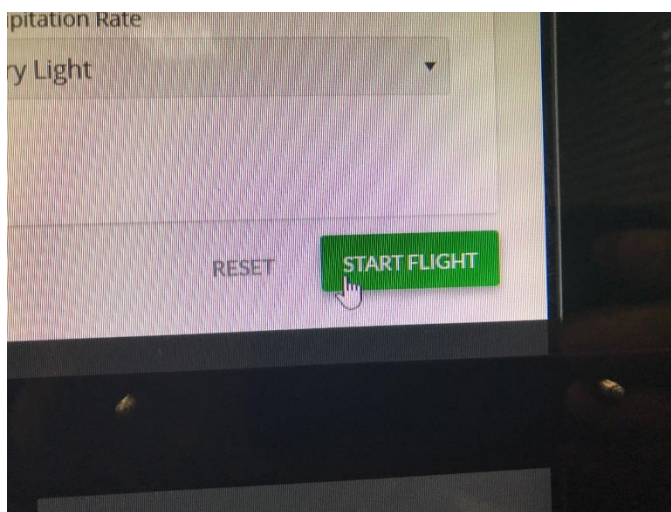


- Enter airport or navaid name - not all intersections or waypoints are in the database. Airports should include the "K" in front of the name if required (just like in ForeFlight). Some airports have not been updated - BQ1 is still listed as 5NC3
- When you enter the airport ID, you can choose to start IN AIR or ON GROUND

- If you enter a navaid, you will start in the air
- When starting in the air you will enter
  - HEADING of the airplane
  - RADIAL from the airport or navaid
  - DISTANCE from the airport or navaid
  - ALTITUDE and AIRSPEED

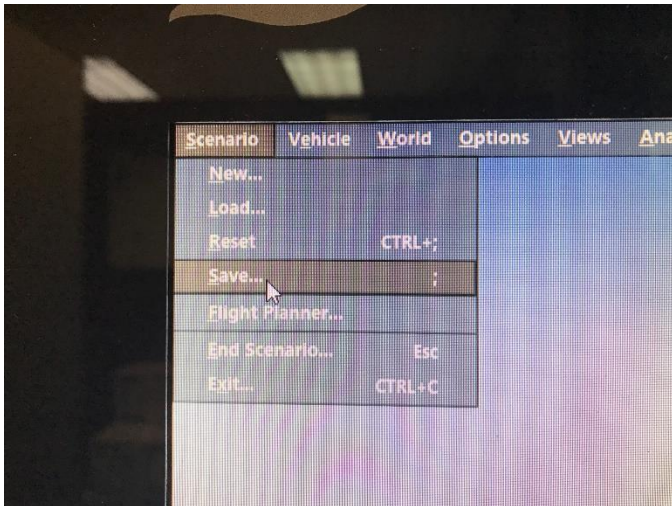


Enter weather on right side of screen

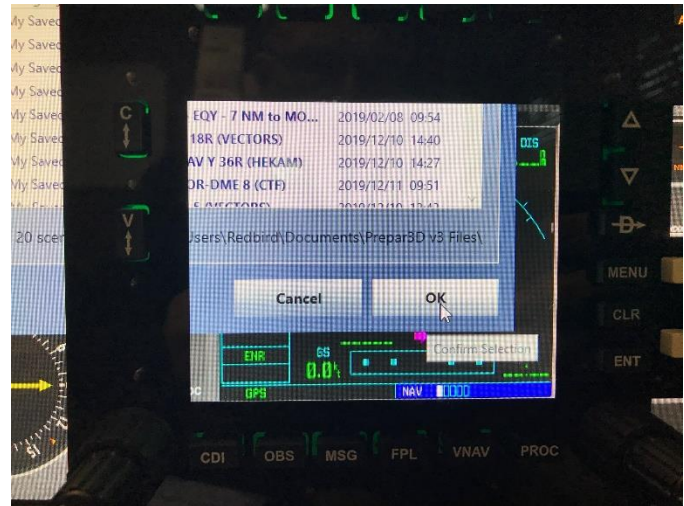


- Click on START FLIGHT
- Flight loads, lower left corner reads "SIMULATION PAUSED - Press P to continue". Continue as before with Scenario flight

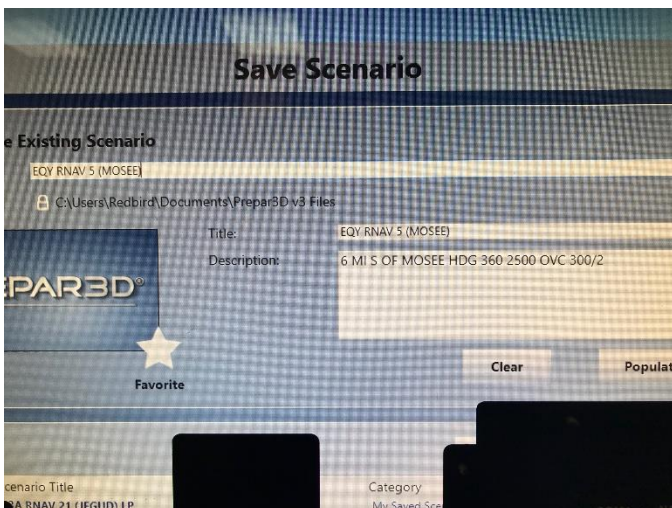
## TO CREATE A SCENARIO AND SAVE A FLIGHT



Pause the flight, press ALT to bring the Top Menu bar to the screen. Click on SCENARIO and SAVE



Click on OK to save the scenario



Enter FILE NAME (put destination airport ID first - without the leading "K") then enter other details in DESCRIPTION. The File Name will be the first line of the Scenario label, the Description will be the second line

## ODDS AND ENDS

THINGS WE HAVE FOUND in the 530 - please add to the list (send Ron an email or text)

- Since the BRG field in the 530 NAV screen can't be changed, you can't put DTK and TRK side by side
- RNAV or Legacy approaches (such as AFP RNAV 16 or ILS 34) that have HILPT as part of the approach do not allow you to remove the hold if the course reversal is not needed
- There are no Volume buttons to PUSH ID on the NAV but if you push NAV1 on audio panel you will hear Morse Code identifier. You will also get VOR and ILS ID visually on the 530

When turning the knobs to set instruments (CDI, Heading Bug, etc) turn them slowly.

The autopilot is a KAP140. A manual is available on the Aerowood website.

Scenery is practically non-existent. Apparently EQY used to have a lot of strange looking buildings!

During a flight you can change location and weather by pausing, and using Top Menu bar (Press ALT to display Menu Bar)